

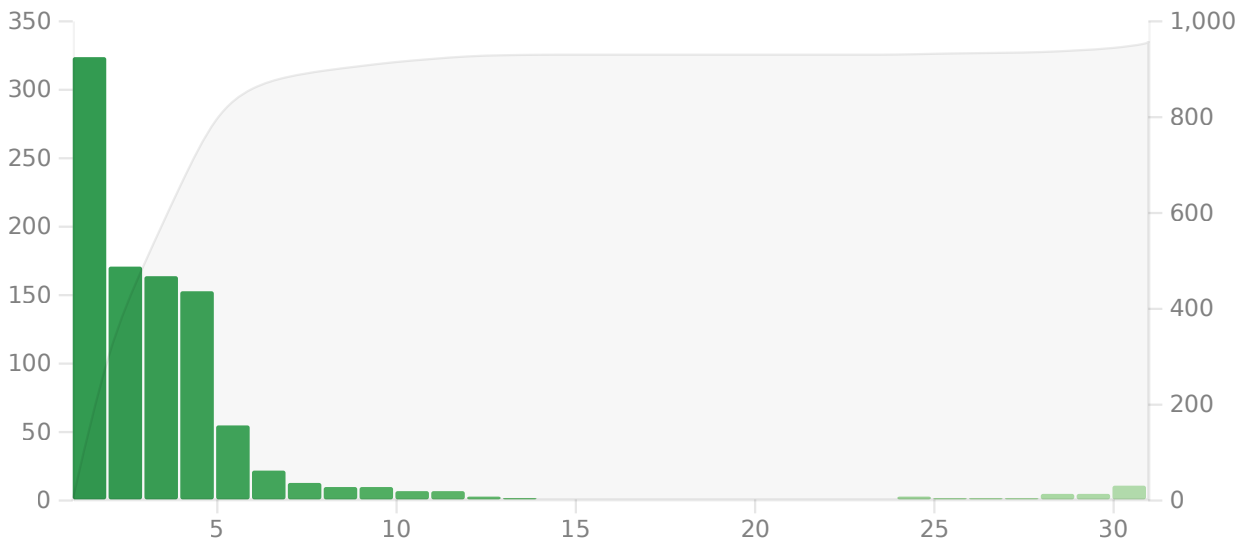
# Today

Studied 398 cards in 1.11 hours today (10.03s/card)  
 Again count: 43 (10.8%)  
 Learn: 0, Review: 355, Relearn: 43, Filtered: 0  
 No mature cards were studied today.

# Future Due

The number of reviews due in the future.

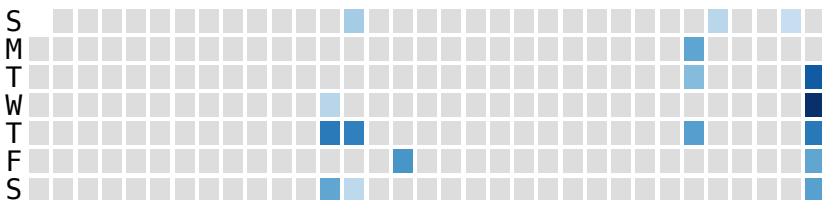
1 month  
  3 months  
  1 year  
  all



Total: 956 reviews  
 Average: 32 reviews/day  
 Due tomorrow: 323 reviews

# Calendar

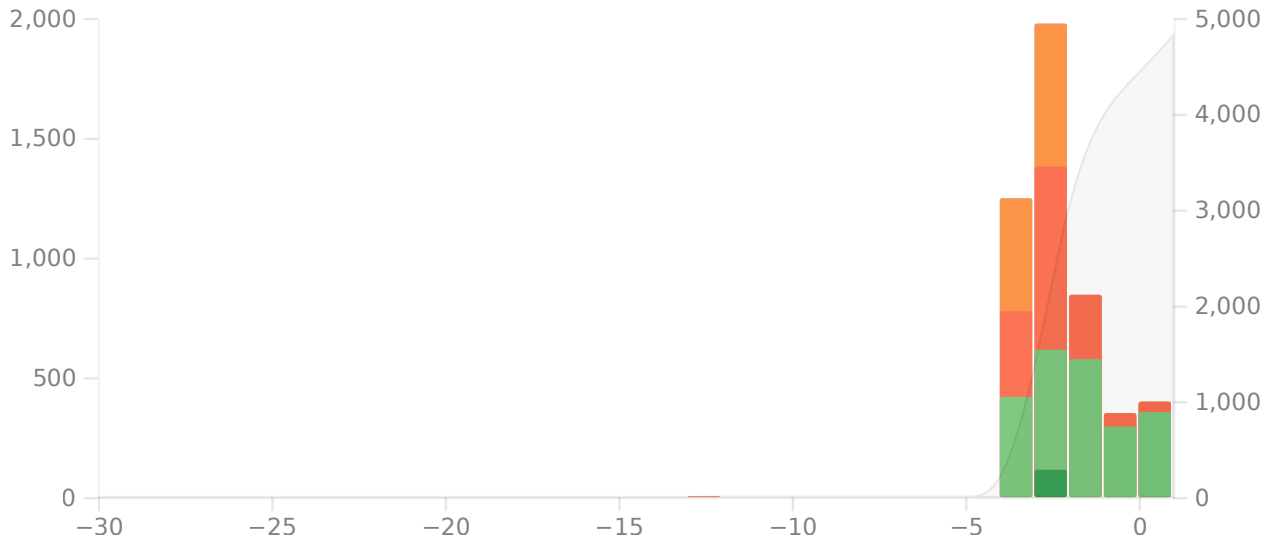
◀ 2024 ▶



# Reviews

The number of questions you have answered.

Time  1 month  3 months  1 year



Days studied: 6 of 31 (19.35%)

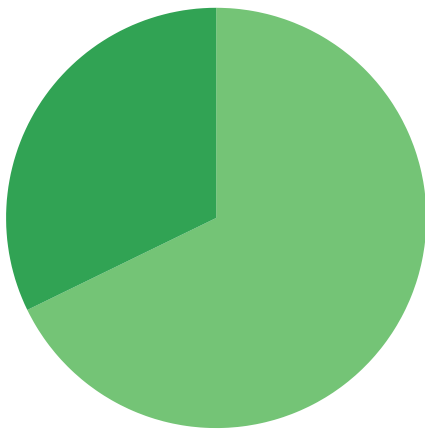
Total: 4,818 reviews

Average for days studied: 803 reviews/day

Average over period: 155 reviews/day

# Card Counts

Separate suspended/buried cards

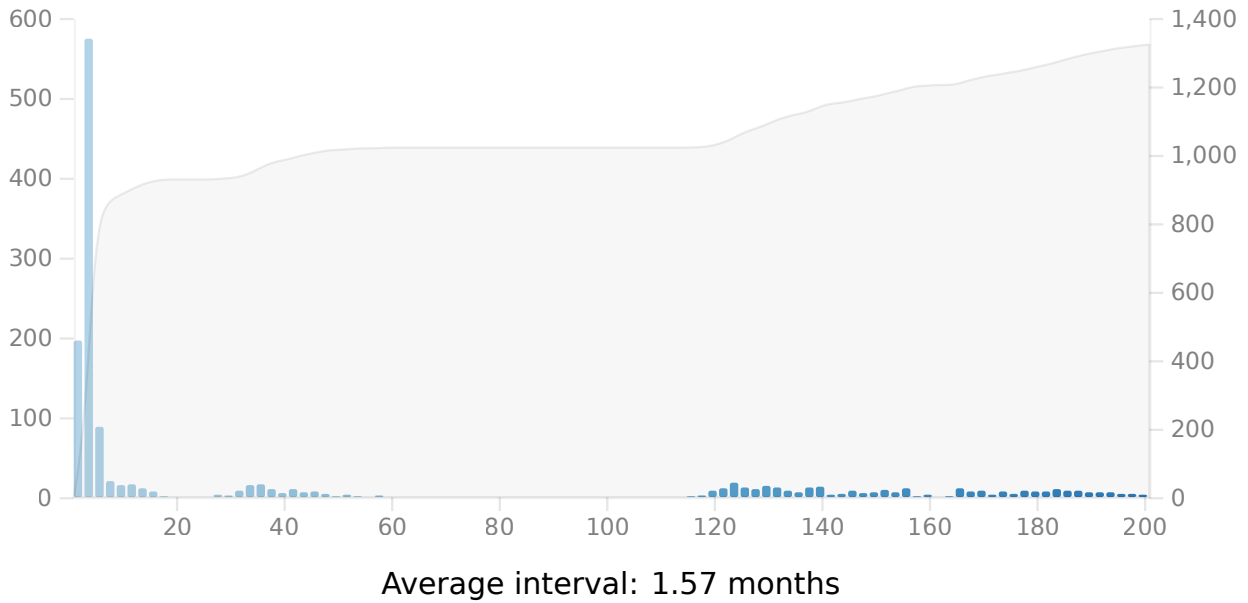


<input type="checkbox"/> New	0	0%
<input type="checkbox"/> Learning	0	0%
<input type="checkbox"/> Relearning	0	0%
<input checked="" type="checkbox"/> Young	928	67.79%
<input checked="" type="checkbox"/> Mature	441	32.21%
<input type="checkbox"/> Suspended	0	0%
<input type="checkbox"/> Buried	0	0%
Total	1,369	

# Review Intervals

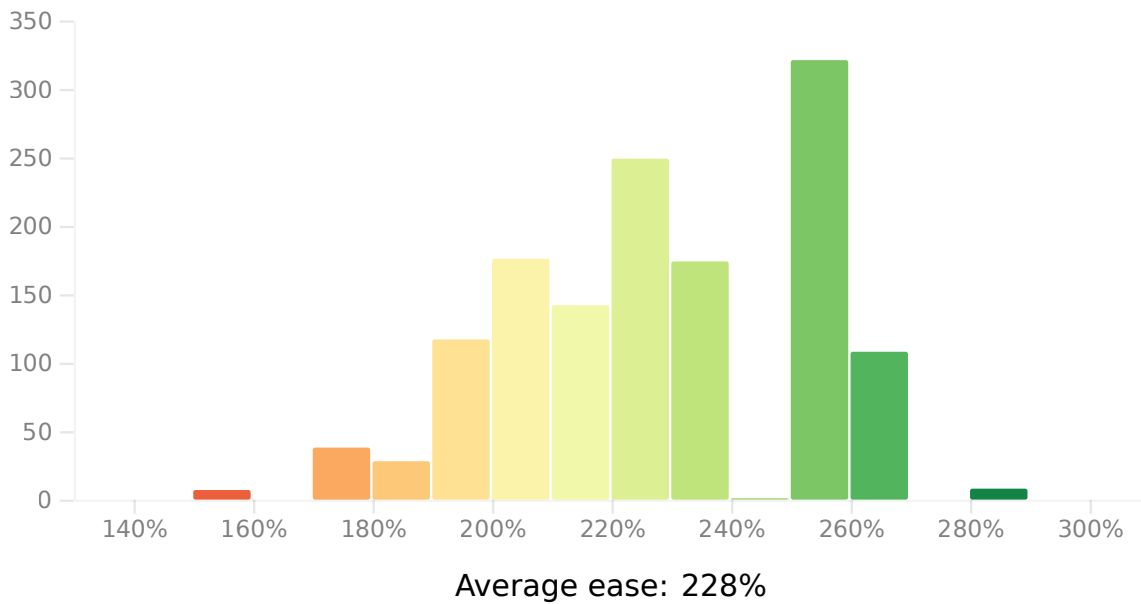
Delays until reviews are shown again.

1 month  50%  95%  all



# Card Ease

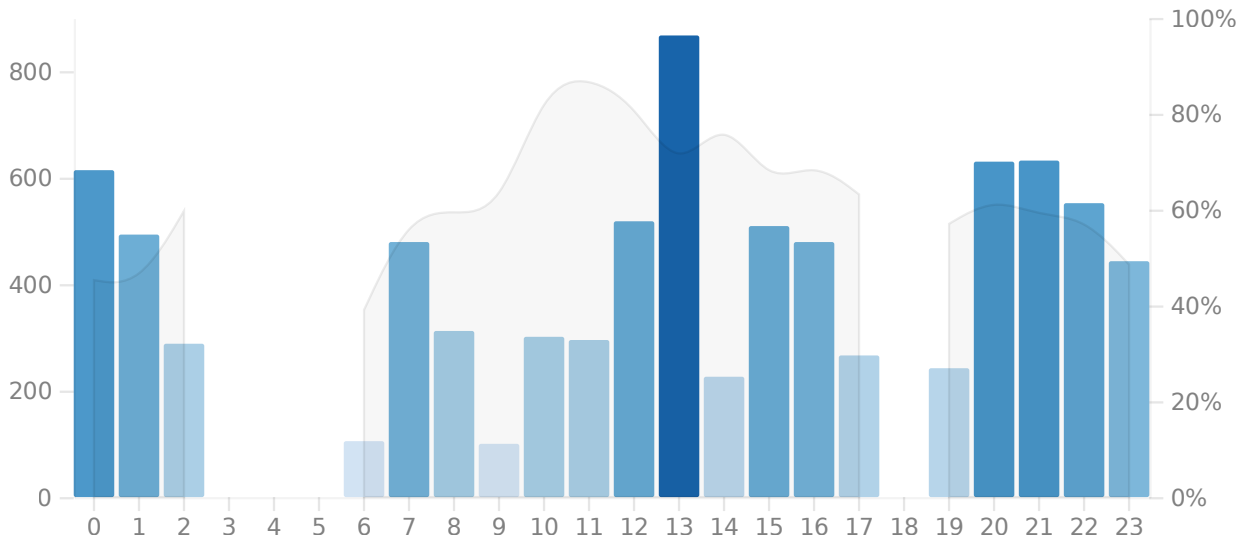
The lower the ease, the more frequently a card will appear.



# Hourly Breakdown

Review success rate for each hour of the day.

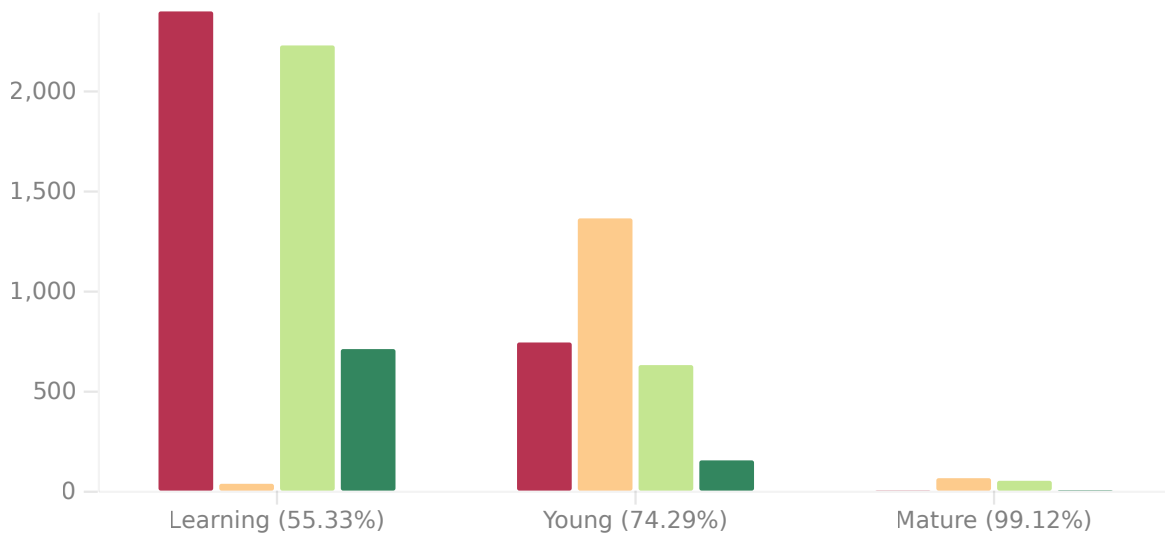
1 month  3 months  1 year



# Answer Buttons

The number of times you have pressed each button.

1 month  3 months  1 year



# Added

---

The number of new cards you have added.

1 month  3 months  1 year  all

NO DATA